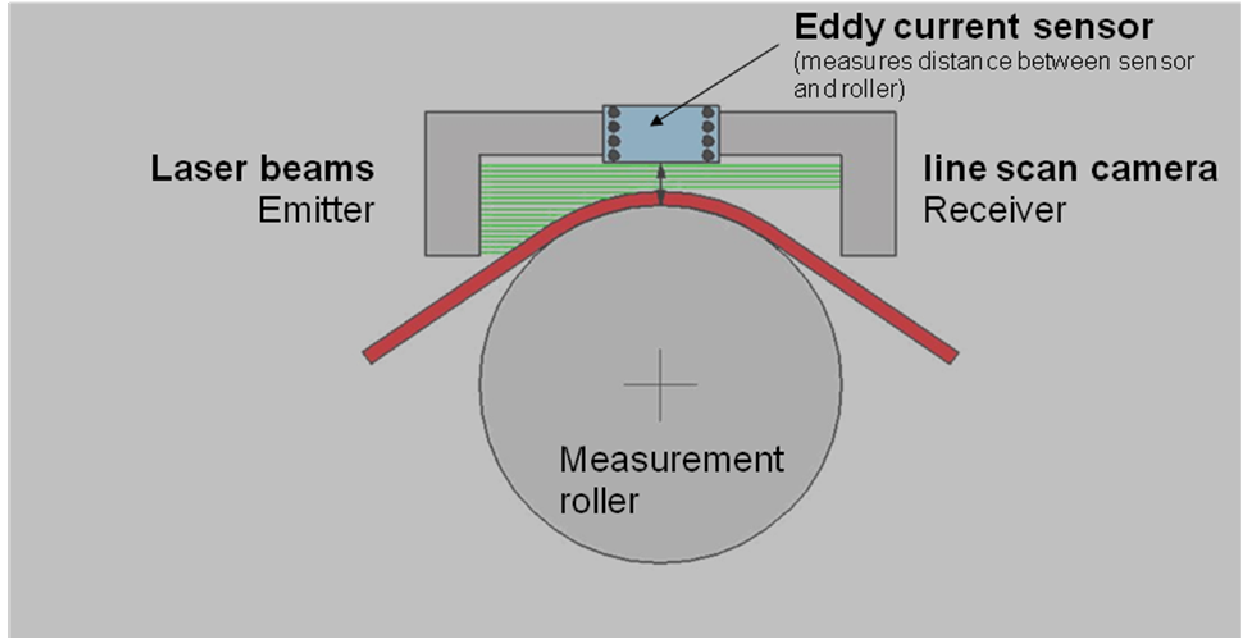


## LASER SHADOW / EDDY CURRENT

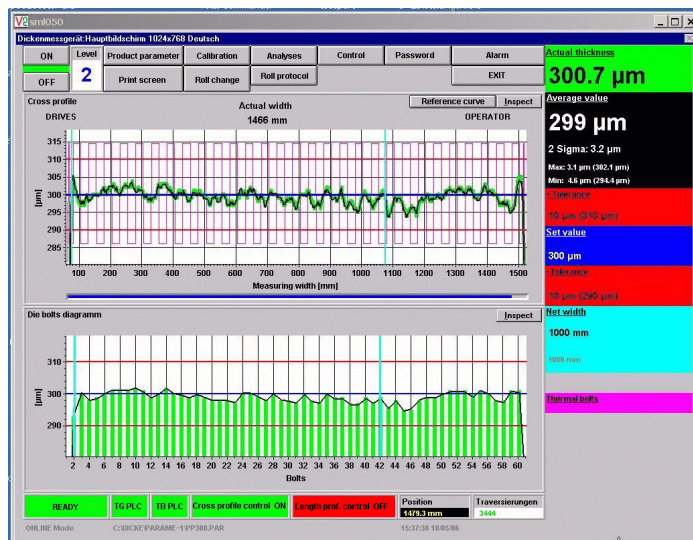


### Laser Shadowing:

Light beams are guided over measurement roller and sheet, the receiver (line scan camera) detects beams or shadow. Beams are shadowed due to measurement roller and sheet. The distance sensor to measurement roller is detected with eddy current sensor.

With the result of both measurements (shadowing and eddy current) the thickness of sheet is calculated.

No calibration with an external caliber is needed; measurement is independent from sheet properties!



main screen

thickness profile over sheet width

thickness profile over die bolt number